

3-PORT MOTORIZED DIVERTER VALVE, TYPE VE

Technical datasheet Nr 72

DESCRIPTION:

Actuator

- Actuation time: 30 s / 90°
- Operation mode: Diverter – ON-OFF control, 2-/3- point control
- Power supply: 230 V~
- Power cable: 3 x 0.75 mm² – L = 1.5 m
- Protection type: IP 41
- Protection class: II
- With or without auxiliary switch
- Simple manual operation (for commissioning or maintenance operations)
- The direction of rotation is selected by jumper setting

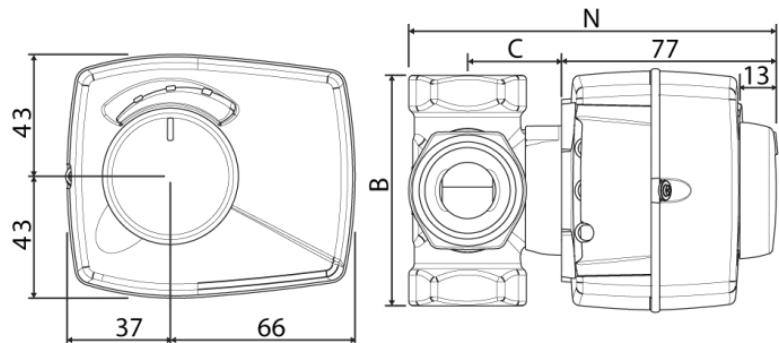
Valve

- Body and slide: DZR brass – Shaft: PPS composite – Seals: EPDM
- Operating temperature range: -10°C to +110°C (continuously) or +130°C (temporarily)
- Max. operating pressure: 10 bar

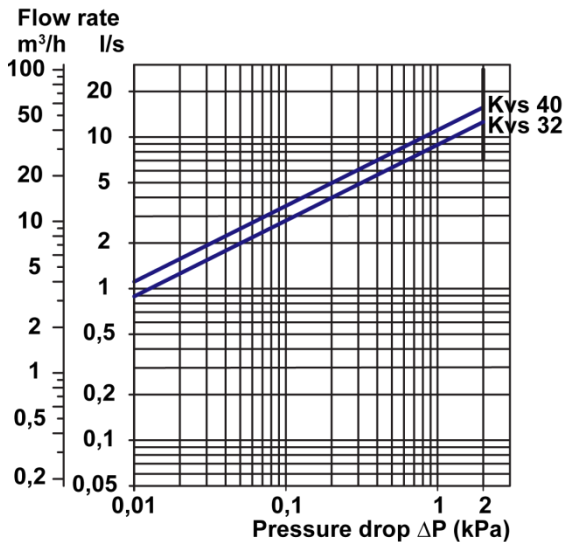


DIMENSIONS:

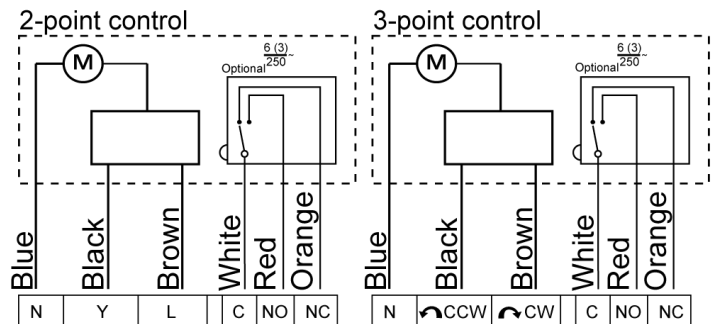
Size	DN40	DN50
B	106	120
C	44	46
N	154	158



PRESSURE DROP CURVES:



ELECTRIC DIAGRAM:



AVAILABLE MODELS:

Reference	Designation
70010123020	3-port motorized diverter ON-OFF valve Type VE DN40 Kvs30 without auxiliary switch
70010123021	3-port motorized diverter ON-OFF valve Type VE DN50 Kvs40 without auxiliary switch
70010123022	3-port motorized diverter ON-OFF valve Type VE DN40 Kvs30 with auxiliary switch
70010123023	3-port motorized diverter ON-OFF valve Type VE DN50 Kvs40 with auxiliary switch